

Andantino wiesli pustelnika H. Moniuszko

Musical staff with lyrics: Ty - lem wy-trwał

Musical staff with lyrics: ty - le wy - cier - pił - lem chy - ba

Musical staff with lyrics: sińcercy chy ba sińcercy bo - le się u -

Musical staff with lyrics: ko - ja Jes - lim płochym obraził za

Musical staff with lyrics: pa - lem że ob - rażę te ob - rażę kró - wiego kępie

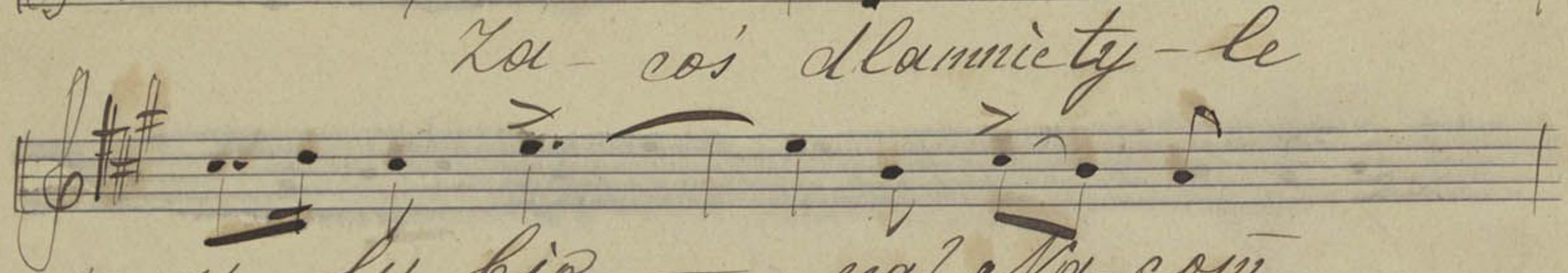
Musical staff with lyrics: me - ja



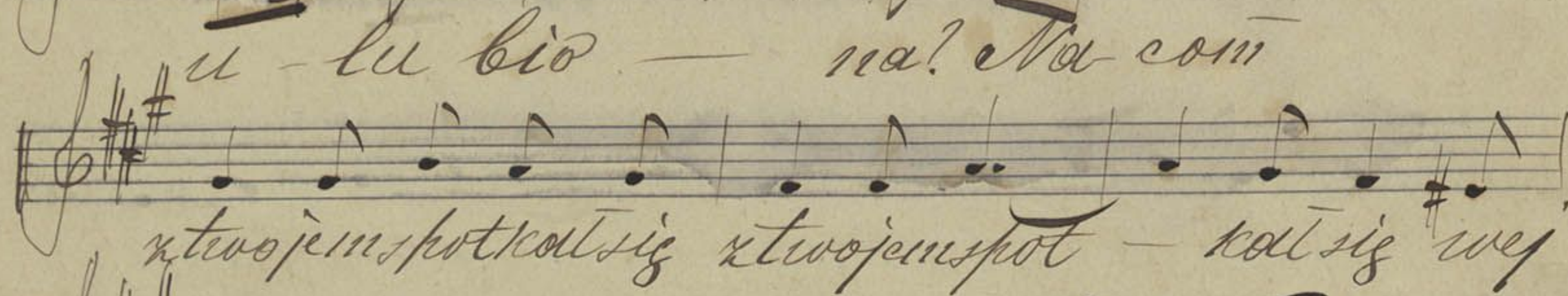
*mol. a tempo*



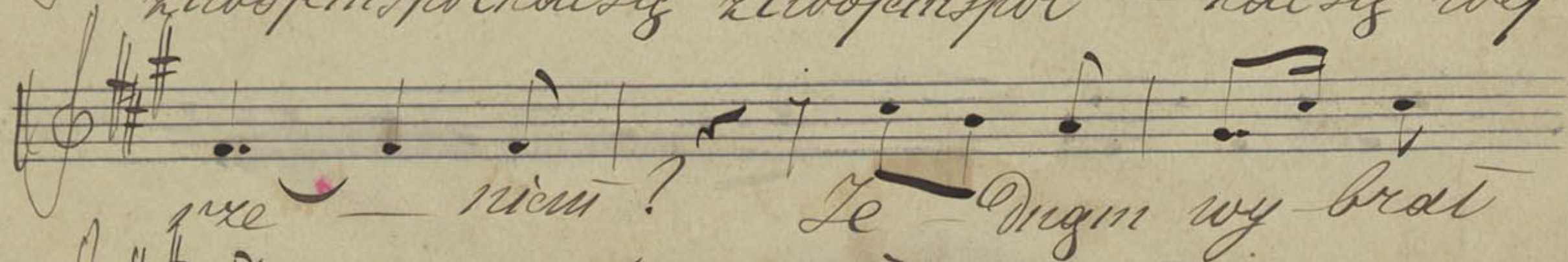
Ła - coś słamniety - le



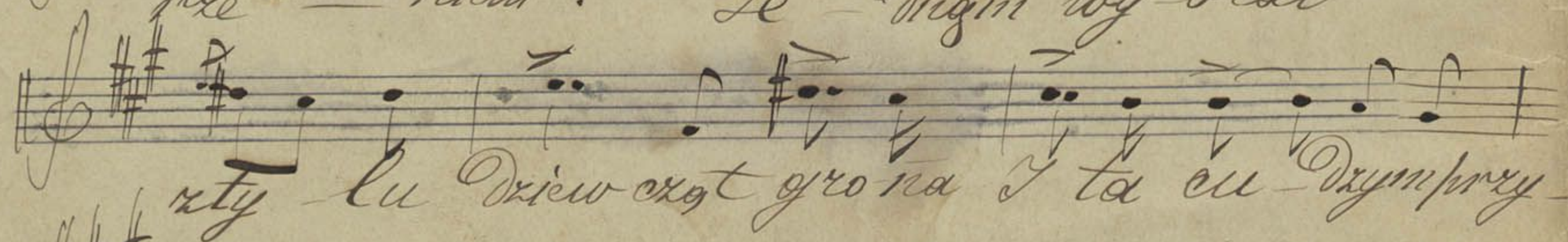
u - lu bio - na? Na com



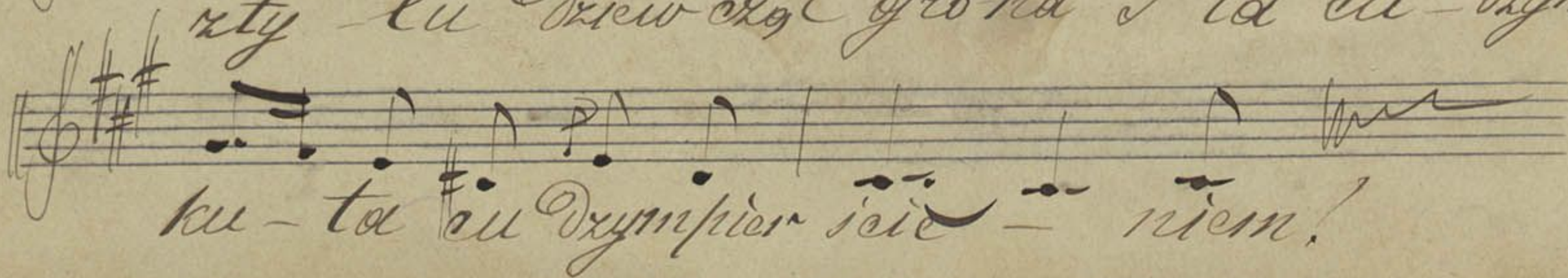
stwojem spotkaj się stwojem spot - kaj się wej -



nie - wiem? Le - dym wy brat



sty lu Diew cnot gro na i ta cu Dym pory



ku - ta cu Dym pier się - wiem!

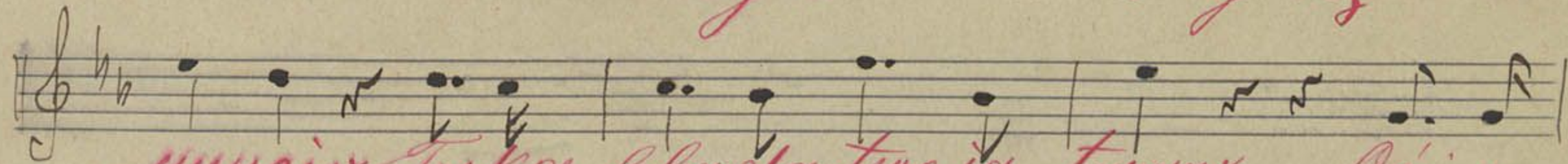


*Moderato*

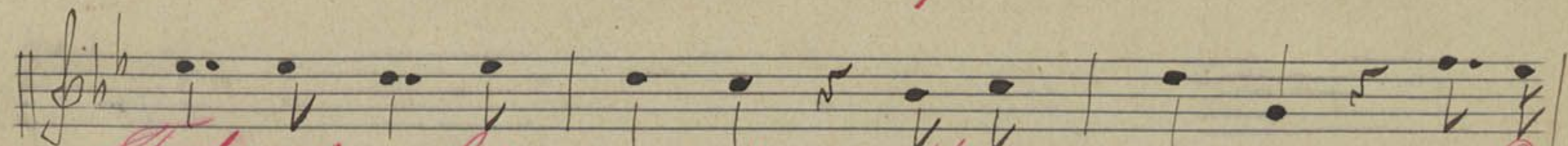
*Trysknota górala*



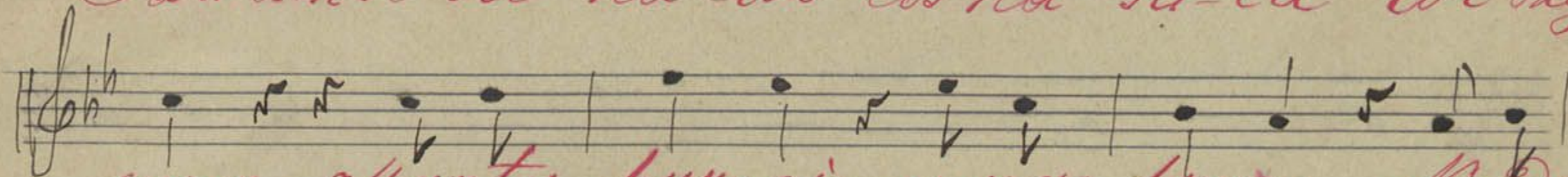
*Mój d'ru ciarku ty się*



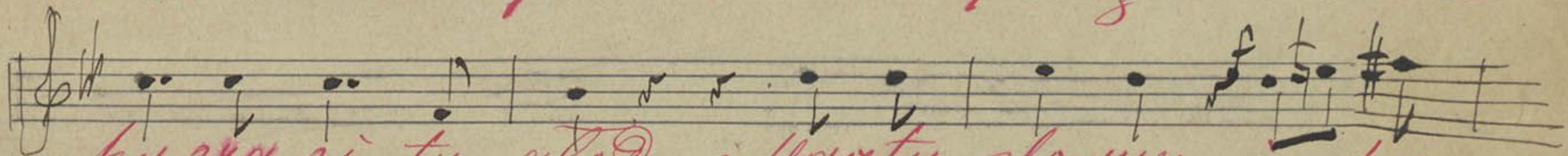
*smucisz. Taką blaclą twoją twarzą Coś o*



*Tatrach so-bie nu-cisz coś na ser-cu we d'ny*



*marz i marzta pręcie u nas prędy Me do*



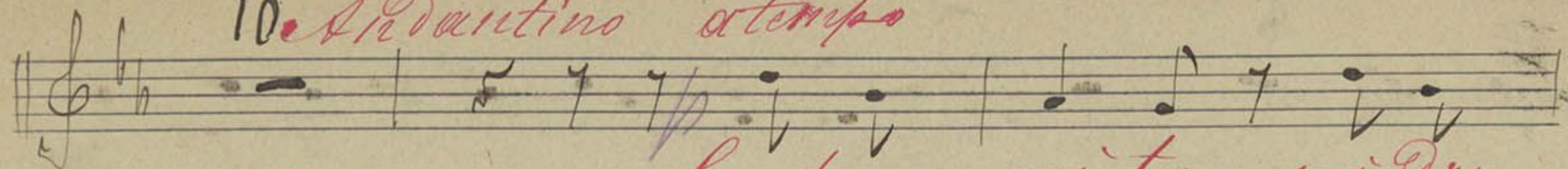
*ku-cha ci tu głod i marzta do my i pa*



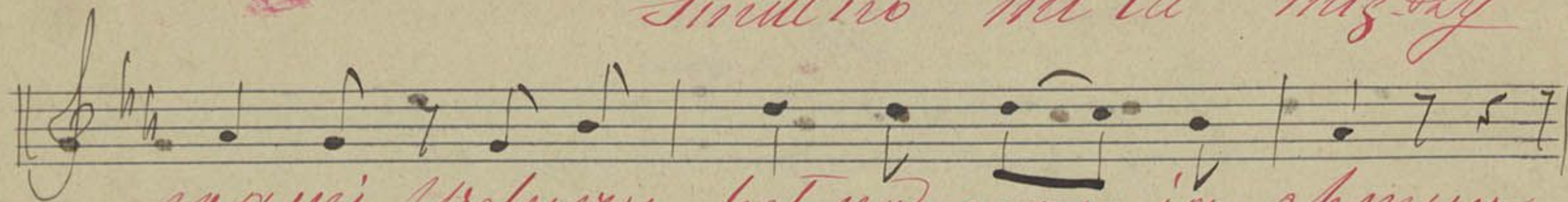
*La ce wosaki u nas do-bry lud.*



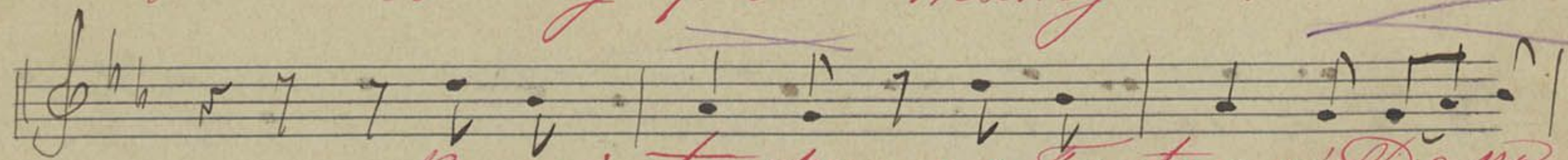
10. *Andantino* *al tempo*



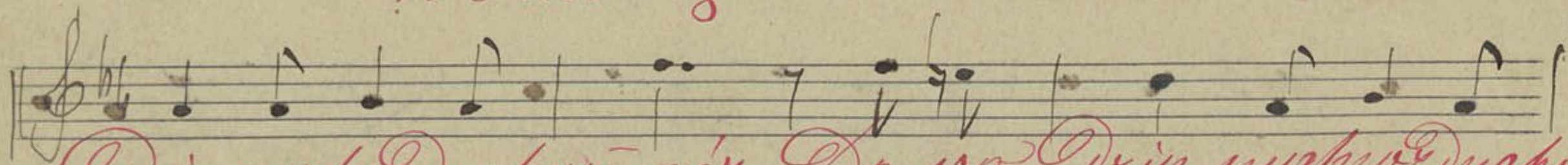
*Smutno mi tu mi gdy*



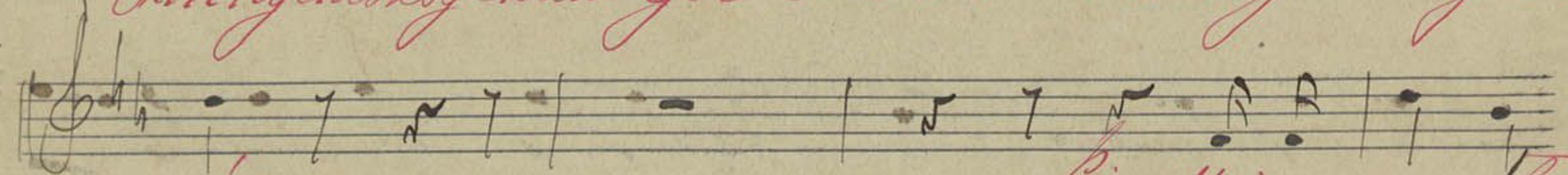
*wami Weluxy pet no mam ja smur*



*Bo mi tę skno za ta tra mi Do no*

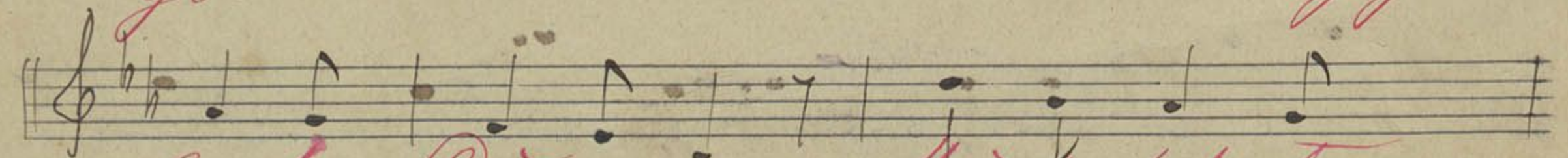


*Ozi rycho w dycham góe Do no Ozi rycho w dycham*



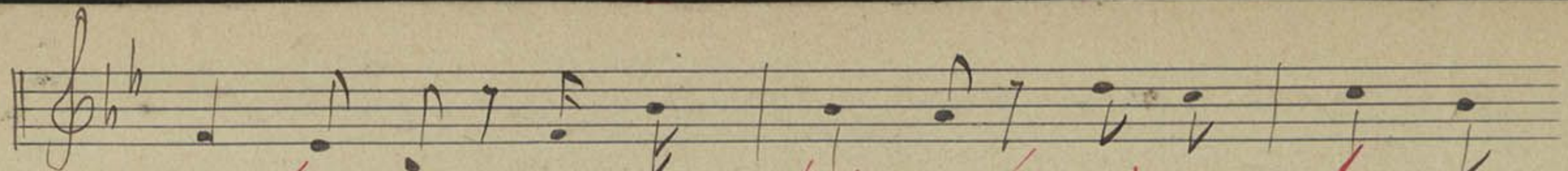
*gór*

*p. Alnie wy gra la*

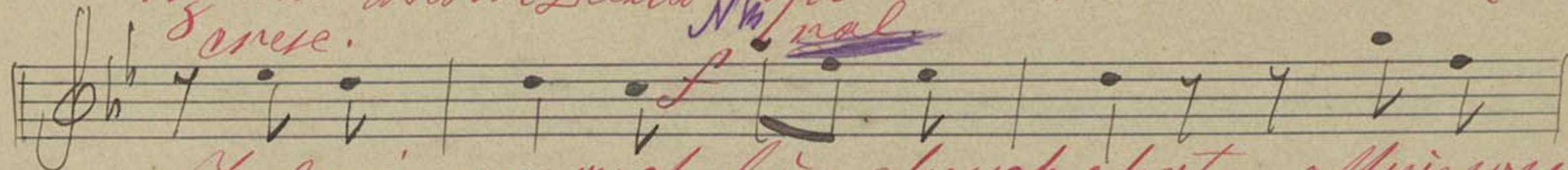


*Cie da Do - mu Alnie po pchng to*

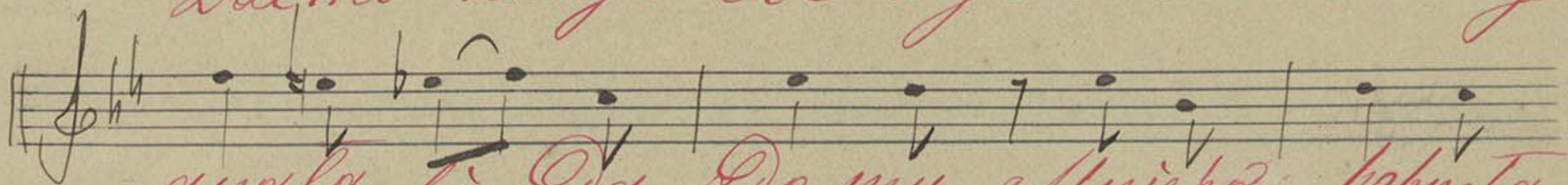




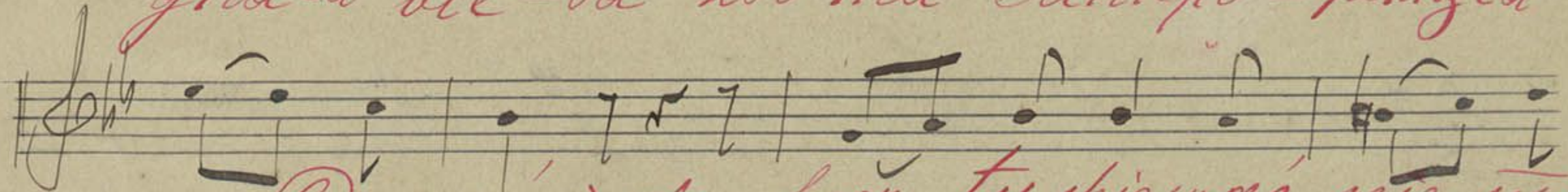
ng dwa świat *sexta* *spiewać* niema ko-mu  
z *erese.*



Zal mi naszych *bię* dnych chat *Mnie* wy



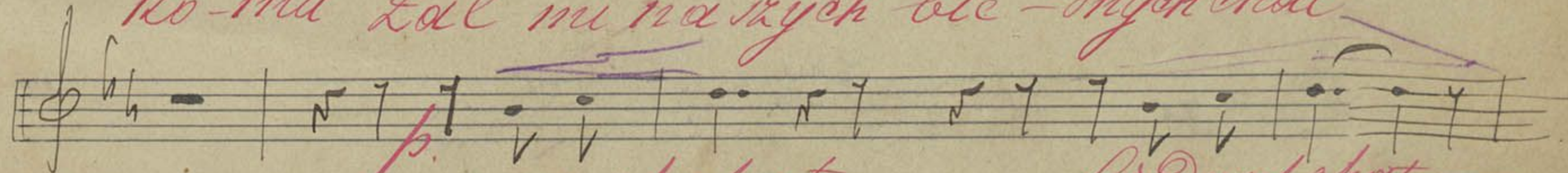
gwała *bię* Da Do-mu *Mnie* ho - schyła



ng *Dwa* świat *sexta* tu *spiewać* niema m

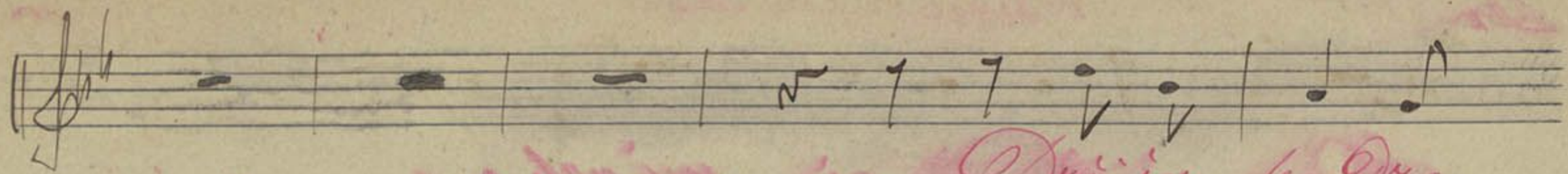


ko-mu Zal mi naszych *bię* dnych chat

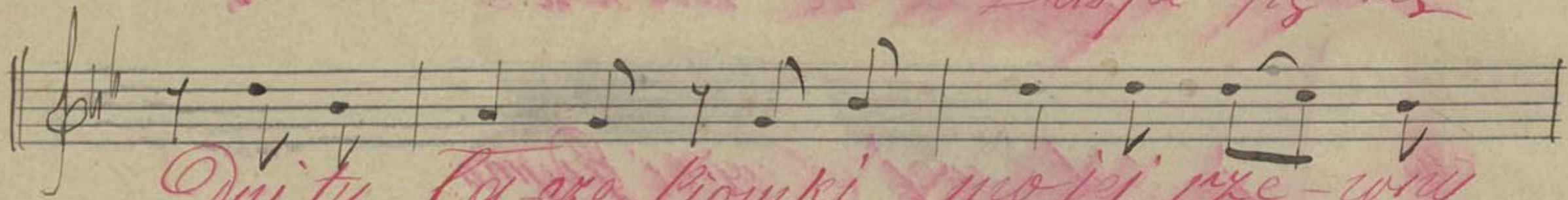


*p.* naszych chat *bię* dnych chat —

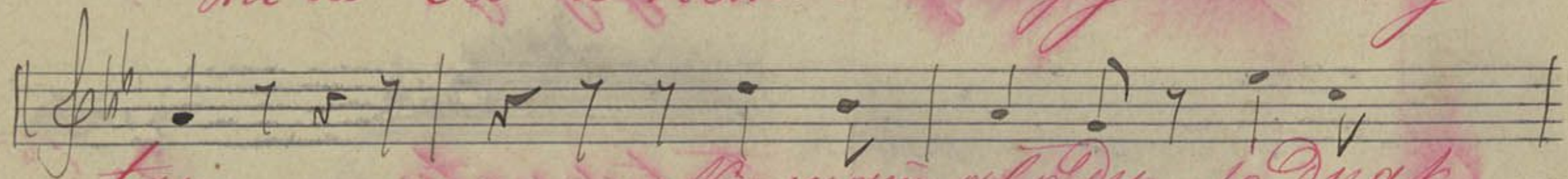




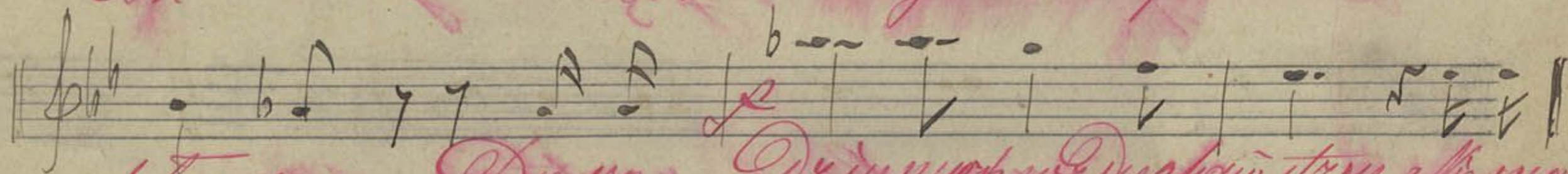
*Prisja ps-nye*



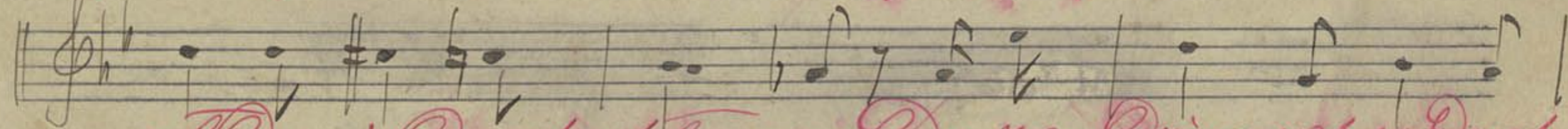
*Omitu ta-ere Pionki mojj nye-rosy*



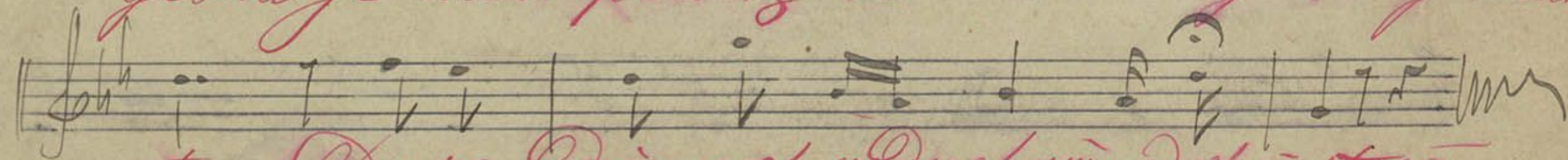
*ton Nie mam glodu je dnak*



*pla-rog Do-ro Dzinnych w dy chom strom Nie mam*



*glodu je dnak pla-rog Do-ro Dzinnych w dy chom*



*strom Do-ro Dzinnych w dy chom w dy chom strom*



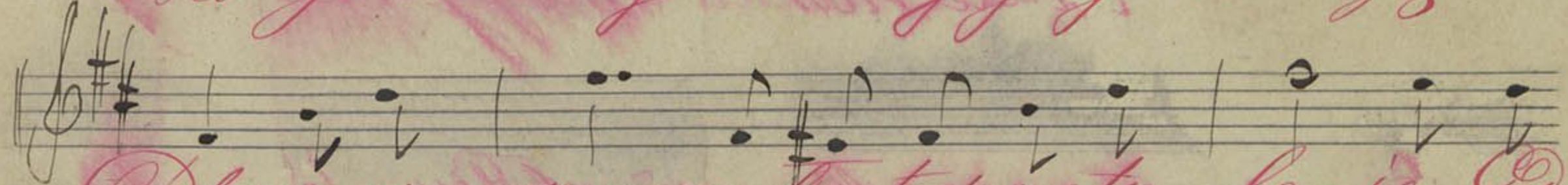
*Lento*      *Powiedzcie mi*      *St. Moniuszko.*



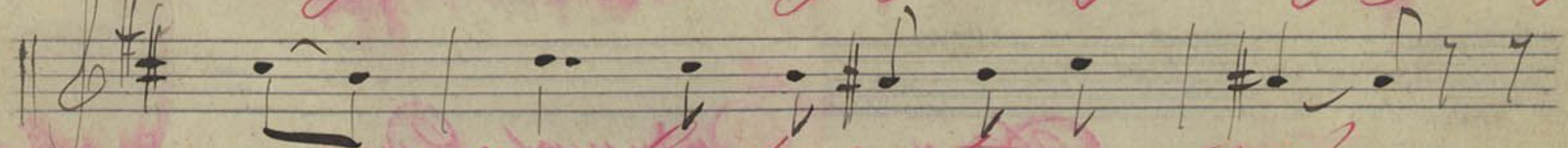
*Powiedzcie mi ach co się ze mną*



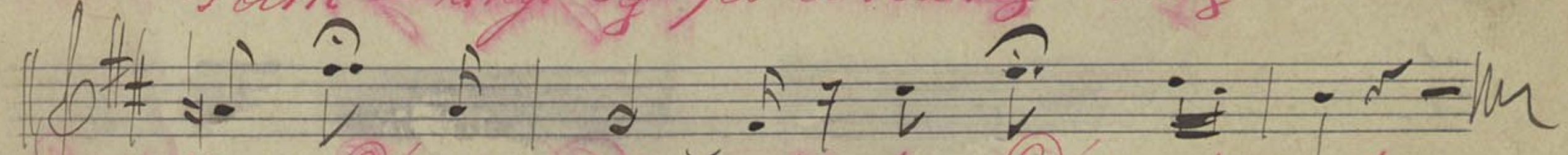
*Drze je ból o wej chwile Gdyni w realm ję*



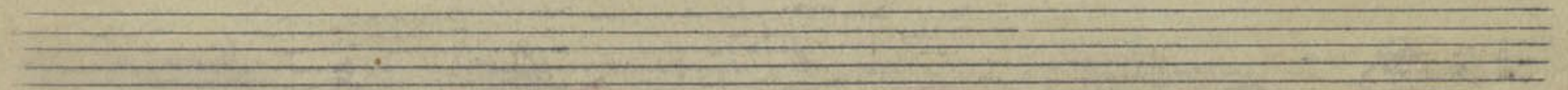
*Placzego rzece ne try tesknoty le-je Gdy*



*sonn - kiny by porostany swag?*



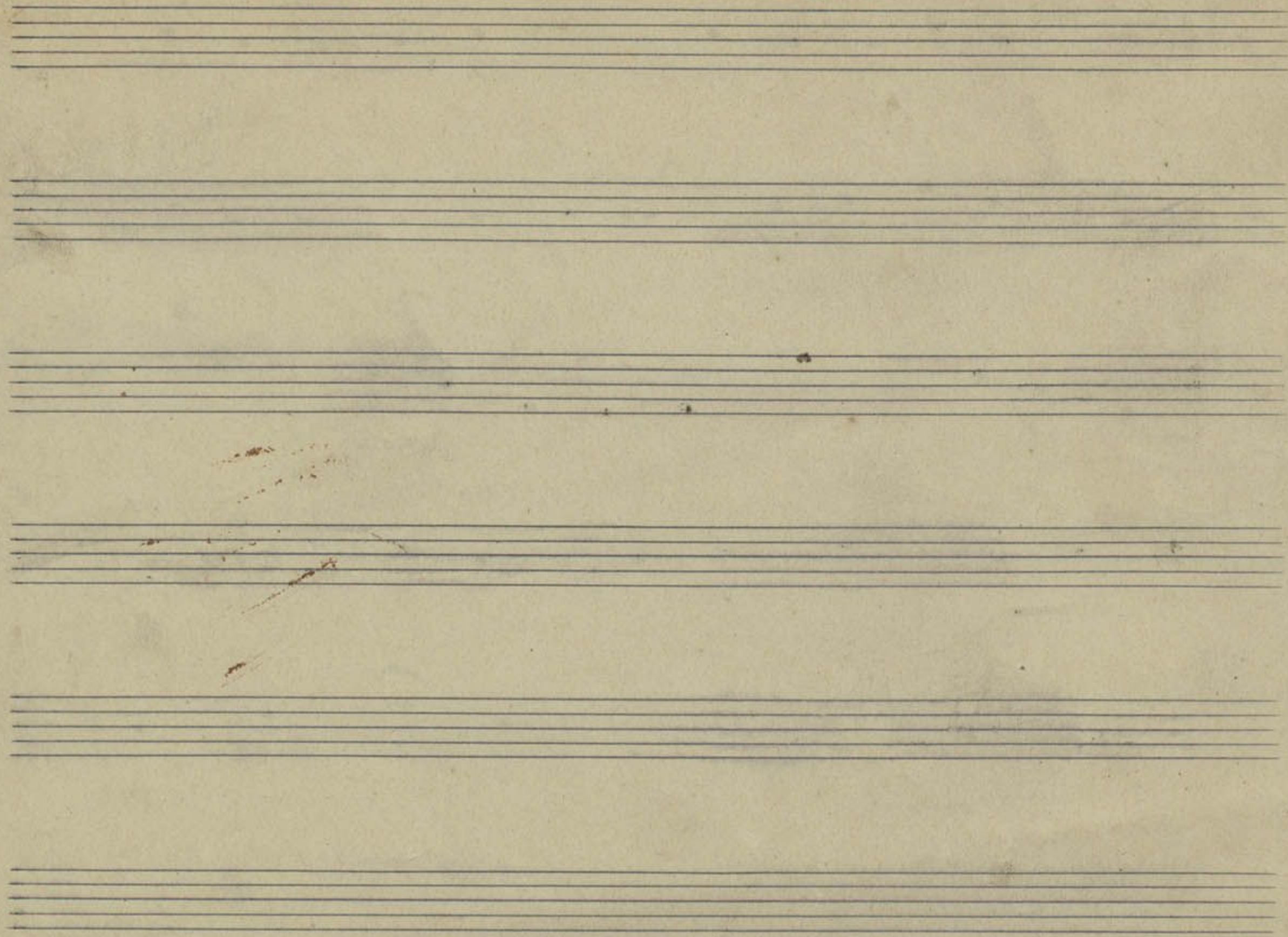
*Powiedzcie mi ach powiedzcie mi*



*... ..*



17/80



Нацыянальная  
бібліятэка  
Беларусі

ЗОН // 4431 (026)